

PART OF SECTION. 32, T.7N., R.1E., S.L.B. & M.

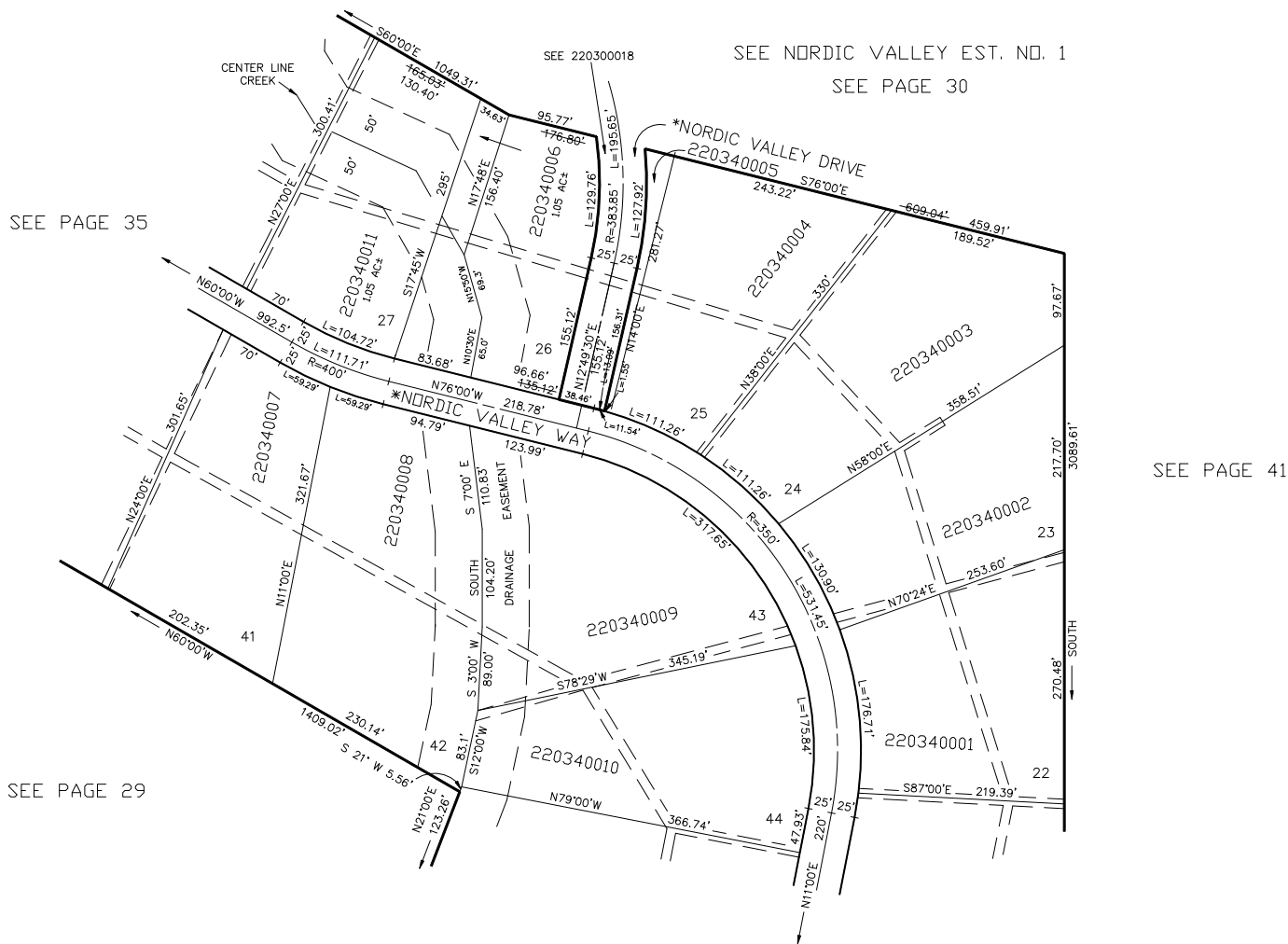
# SILVER BELL ESTATES NO.1

LOTS 22 - 27 & 41 - 44

TAXING UNIT: 317

IN WEBER COUNTY

SCALE 1" = 100'



ALL UTILITY EASEMENTS ARE 10  
FEET WIDE.  
THE DRAINAGE EASEMENT IS 100  
FEET WIDE.

FOR COMPLETE ENG DATA SEE  
ORIGINAL DEDICATION PLAT IN  
BOOK 12, PAGE 90 OF RECORDS.

ALL ROADS IN THE SUBDIVISION  
ARE OWNED BY WEBER COUNTY  
SEE 22-032-0028

\*NOTE: STREET NAME ACCORDING  
TO COUNTY SURVEYOR'S OFFICE